





## We've got a new look

At Classroom, we go beyond the basics, creating school uniform essentials that fit the way kids learn, play, and grow.

Classroom takes classic styles and incorporates the latest performance fabrics and design features. So while they may resemble the traditional uniforms of the past, our clothing is incredibly durable, easy-care, and looks as great on the last day of school as it did on the first.

This year, we added a new stretch Ponte Knit group for girls and juniors that includes a tapered classic leg pant, kick pleat traditional length skirt, and a skater scooter with modesty shorts that's perfect to twirl in.

We've also expanded the size range of our classic pique polo dress to bridge the gap between toddlers and older girls, improved the fit of our fem-fit cardigan, and added the color black to our Toddler Pull-on Pant and Shorts.

Thank you for your business and continued loyalty. We look forward to serving you during this school season and many more to come.



## Table of Contents

- 3 Plaids
- 6 New Ponte Knit
- 7 Polos
- 8 Woven Tops
- 9 Skirts & Scooters
- 10 Jumpers, Knit Dress, Modesty Shorts & Leggings
- 11 Girls' & Juniors' Pants & Shorts
- 12 Boys' & Young Men's Pants
- 13 Boys' & Young Men's Shorts
- 14 Jackets & Sweaters
- 15 Socks & Hosiery
- 16 Body Measurement Charts
- 18 How to Measure, Color Abbreviations
- 19 Contact List & Return Policy

- 1 ponte kick pleat skirt in HGRY
- 2 fem-fit cardigan in DNVY
- 3 ponte knit tapered leg pant in BLK
- 4 ponte skater scooter in DNVY
- 5 ponte knit tapered leg pant in HGRY
- 6 pique polo dress in PINK



## Most Popular Plaids

- ★ Growth features, such as adjustable straps in jumpers, adjustable waist elastic for no-gap fits and generous 2-inch "room to grow" hems
- ★ Baked-in pleats that look sharp and pressed with minimal ironing
- ★ Easy-care, wrinkle-resistant
- ★ Wash-and-wear performance
- ★ Discreet pocket
- ★ Durable, colorfast
- ★ Stitched-down pleats for a more flattering appearance
- ★ Consistent patterning



Look for the stretch symbol on stretch twill & poplin.





## Plaid Jumpers



### Drop Waist Jumper Model 94

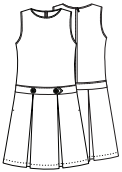
100% Polyester

5P4941 3-6X

5P4942 7-16

5P4943 7h-24h (Girls' Plus)

Plaid jumper with front and back pleats, decorative button detail at waistband, two side seam pockets and back zip closure.



Available in Plaid #42, #43, #79, #83, #87. Shown in Plaid #85.



### Drop Waist Jumper Model 94

65% Polyester, 35% Cotton

5PC4941 3-6X

5PC4942 7-16

5PC4943 7h-24h (Girls' Plus)

Plaid jumper with front and back pleats, decorative button detail at waistband, two side seam pockets and back zip closure.



Available in Plaid #37, #41, #54, #55, #57, #76, #80. Shown in Plaid #37.



### V-Front Jumper Model 62

100% Polyester

5P4621A 3-6X

5P4622A 7-16

5P4623A 7h-24h (Girls' Plus)

V-Front Jumper with right side inseam pocket, side zip closure and adjustable interior waistband and adjustable straps. Traditional knee length.



Available in Plaid #43, #83, #87. Shown in Plaid #43.



### V-Front Jumper Model 62

65% Polyester, 35% Cotton

5PC4621A 3-6X

5PC4622A 7-16

5PC4623A 7h-24h (Girls' Plus)

V-Front Jumper with right side inseam pocket, side zip closure and adjustable interior waistband and adjustable straps. Traditional knee length.



Available in Plaid #41, #54, #55, #57, #76, #80. Shown in Plaid #41.

## Plaid Jumpers



### Slit Front Jumper Model 72

100% Polyester

5P4721A 3-6X

5P4722A 7-16

5P4723A 7h-24h (Girls' Plus)

Jumper with right side inseam pocket, side zip closure, adjustable interior waistband & adjustable straps. Traditional knee length.



Available in Plaid #43, #79, #85, #87. Shown in Plaid #87.



### Slit Front Jumper Model 72

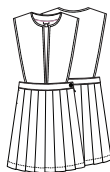
65% Polyester, 35% Cotton

5PC4721A 3-6X

5PC4722A 7-16

5PC4723A 7h-24h (Girls' Plus)

Jumper with right side inseam pocket, side zip closure, adjustable interior waistband & adjustable straps. Traditional knee length.



Available in Plaid #41, #54, #55, #57, #80 Shown in Plaid #55.





## Plaid Skirts, Kilts & Scooters



### Kick Pleat Model 34

100% Polyester  
 5P5342A 7-16  
 5P5343A 7h-24h (Girls' Plus)

Kick pleat skirt with right side inseam pocket, side zip closure with button and adjustable interior waistband. Traditional knee length.



Available in Plaid #42, #43, #79, #83. Shown in Plaid #42.



### Kick Pleat Model 34

65% Polyester, 35% Cotton  
 5PC5342A 7-16  
 5PC5343A 7h-24h (Girls' Plus)

Kick pleat skirt with right side inseam pocket, side zip closure with button and adjustable interior waistband. Traditional knee length.



Available in Plaid #37, #41, #54, #55, #57, #76, #80. Shown in Plaid #54.



### Kilt Model 37

100% Polyester  
 5P5372A 7-16  
 5P5373A 7h-24h (Girls' Plus)

Classic pleated kilt, full wrap for modesty. Discreet side pocket with bar tack for added strength, generous 2-inch hem.



Available in Plaid #42, #43, #79. Shown in Plaid #79.



### Kilt Model 37

65% Polyester, 35% Cotton  
 5PC5372A 7-16  
 5PC5373A 7h-24h (Girls' Plus)

Classic pleated kilt, full wrap for modesty. Discreet side pocket with bar tack for added strength, generous 2-inch hem.



Available in Plaid #55, #57. Shown in Plaid #55.

## Plaid Skirts, Kilts & Scooters



### Knife Pleat Skirt Model 32

100% Polyester  
 5P5322A 7-16  
 5P5323A 7h-24h (Girls' Plus)

Knife pleat skirt with right side inseam pocket, side zip closure and adjustable interior waistband. Traditional knee length.



Available in Plaid #42, #43, #79, #83, #87. Shown in Plaid #87.



### Knife Pleat Skirt Model 32

65% Polyester, 35% Cotton  
 5PC5322A 7-16  
 5PC5323A 7h-24h (Girls' Plus)

Knife pleat skirt with right side inseam pocket, side zip closure and adjustable interior waistband. Traditional knee length.



Available in Plaid #37, #41, #54, #55, #57, #80. Shown in Plaid #57.



### Double Pleated Scooter

100% Polyester  
 5P5351A 3-6X  
 5P5352A 7-16  
 5P5353A 7h-24h (Girls' Plus)

Traditional-length scooter, discreet side pocket with bar tack for added strength, side zip closure, built-in poly-knit shorts, generous hem.



Available in Plaid #43, #83. Shown in Plaid #43.



### Double Pleated Scooter

65% Polyester, 35% Cotton  
 5PC5351A 3-6X  
 5PC5352A 7-16  
 5PC5353A 7h-24h (Girls' Plus)

Traditional-length scooter, discreet side pocket with bar tack for added strength, side zip closure, built-in poly-knit shorts, generous hem.



Available in Plaid #41, #54, #55, #57, #76, #80. Shown in Plaid #80.



# New Ponte Knit



## Ponte Tapered Leg Pant

74% Polyester, 22% Rayon, 4% Spandex  
 51141AZ 4-6X  
 51142AZ 7-16  
 51143AZ 8h-20h (Girls' Plus)  
 51144Z 1/2-21/22 (Juniors)

Classic, flawless style features tapered leg for a clean-finished silhouette. Piped waistband and clean-finished seams provide comfort. Reinforced pocket corners for strength. Double-needle topstitching at rise.



## Ponte Skater Scooter

74% Polyester, 22 Rayon, 4% Spandex  
 55341AZ 4-6X  
 55342AZ 7-16  
 55343AZ 8h-20h (Girls' Plus)  
 55344Z 1/2-21/22 (Juniors)

Classic skater style with side pockets. Hidden interior pocket, side zip closure and built-in poly-knit shorts.



## Ponte Kick Pleat Skirt

74% Polyester, 22% Rayon, 4% Spandex  
 55402AZ 7-16  
 55403AZ 8h-20h (Girl's Plus)  
 55404Z 1/2-21/22 (Juniors)

Knee-length ponte kick pleat skirt with front and back pleats, side zip closure and reinforced right side pocket with interior hidden pocket. Generous 2-inch hem for lengthening.





## Unisex Polos



### Short Sleeve Pique Polo

60% Cotton, 40% Polyester  
 58990 2T-4T (Toddler\*)  
 58322 XS-XL (Youth)  
 58324 S-5XL (Adult)

CORE ITEM. Combed cotton/poly blend in ringspun yarns, matching ribbed collar and banded sleeves, three-button placket with dyed-to-match buttons, reinforced shoulder seams and double-needle hem.



(CMBL & WINE not available in 2T-4T; CMBL, KAK & YEL not available in 4XL-5XL)  
 \*Two buttons on toddler sizes.



### Long Sleeve Pique Polo

60% Cotton, 40% Polyester  
 58350 2T-4T (Toddler\*)  
 58352 XS-XL (Youth)  
 58354 S-5XL (Adult)

Combed cotton/poly blend in ringspun yarns, matching ribbed collar and cuffs, three-button placket with dyed-to-match buttons, reinforced shoulder seams and double-needle hem.



(GOLD, HGRY, SSBK, TEAL & WINE not available in 2T-4T)  
 \*Two buttons on toddler sizes.



### Short Sleeve Interlock Polo

60% Cotton, 40% Polyester  
 58830 2T-4T (Toddler\*)  
 58912 XS-XL (Youth)  
 58914 S-5XL (Adult)

Combed cotton/poly blend in ringspun yarns, interlock knit, matching collar and banded sleeves, three-button placket, dyed-to-match buttons, reinforced shoulder seams and double-needle hem.



(GOLD, HGRY, ORG, PINK, SSBK & TEAL not available in 2T-4T; DKPR, GOLD, HGRY, SSKG & YEL not available in 4XL-5XL)  
 \*Two buttons on toddler sizes.



### Long Sleeve Interlock Polo

60% Cotton, 40% Polyester  
 58732 XS-XL (Youth)  
 58734 S-5XL (Adult)

Combed cotton/poly blend in ringspun yarns, interlock knit, matching ribbed collar and cuffs, three-button placket with dyed-to-match buttons, reinforced shoulder seams and double-needle hem.



## Girls' & Juniors' Polos



### Girls' Short Sleeve Fitted Interlock Polo

60% Cotton, 40% Polyester  
 58582 XS-XL (Girls)  
 58584 S-5XL (Juniors)

CORE ITEM. Combed cotton/poly blend in ringspun yarns, interlock knit, feminine fit, three-button placket with dyed-to-match buttons, matching ribbed collar, banded sleeves and double-needle hem.



### Girls' Long Sleeve Fitted Interlock Polo

60% Cotton, 40% Polyester  
 58542 XS-XL (Girls)  
 58544 S-5XL (Juniors)

Combed cotton/poly blend in ringspun yarns, interlock knit, feminine fit, three-button placket with dyed-to-match buttons, matching ribbed collar, hemmed cuffs and double-needle hem.



## Moisture-Wicking Polos



### Unisex Moisture-Wicking Polo

100% Polyester  
 58602 XS-XL (Youth)  
 58604 S-5XL (Adult)

Stain-resistant, moisture-wicking polo with matching ribbed collar, hemmed sleeves, three-button placket, dyed-to-match buttons and side vents.



### Girls' Moisture-Wicking Polo

100% Polyester  
 58632 XS-XL (Girls)  
 58634 S-5XL (Juniors)

Feminine fit, stain-resistant moisture-wicking polo with matching ribbed collar and three-button placket with dyed-to-match buttons, V-notch detail on sleeves and stylish curved hemline.





## Girls' & Juniors' Woven Tops

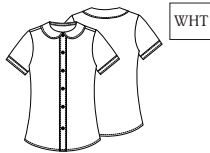
Our new poplin stretch features 145-150 gsm for complete coverage.



### Short Sleeve Peter Pan Blouse

55% Cotton, 45% Polyester  
57320 2T-4T (Toddler)  
57322 XS-XL (Girls)

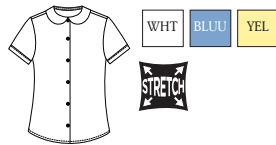
Classic Peter Pan poplin blouse, button-placket front with matching pearlized buttons and cuff detail.



### Short Sleeve Stretch Peter Pan Blouse

59% Cotton, 38% Polyester, 3% Spandex  
57552 XS-XL (Girls)  
57554 S-3XL (Juniors)

Classic short sleeve stretch Peter Pan poplin blouse, button front with matching pearlized buttons and cuff detail.



### Long Sleeve Stretch Peter Pan Blouse

59% Cotton, 38% Polyester, 3% Spandex  
57882 XS-XL (Girls)  
57884 S-3XL (Juniors)

Classic long sleeve stretch Peter Pan poplin blouse, button front with matching pearlized buttons and cuff detail.



## Girls' & Juniors' Fem-Fit Woven Tops

## Boys' & Young Men's Woven Tops



### Short Sleeve Fem-Fit Oxford Shirt

60% Cotton, 40% Polyester  
57422 7-16 (Girls)  
57424 S-3XL (Juniors)

Classic short sleeve Oxford with feminine shaping at sides and back darts. Traditional button-down collar, pearlized buttons, short sleeve with bend back hem, single pocket over left chest, back yoke and shirttail hem.



### Long Sleeve Fem-Fit Oxford Shirt

60% Cotton, 40% Polyester  
57412 7-16 (Girls)  
57414 S-3XL (Juniors)

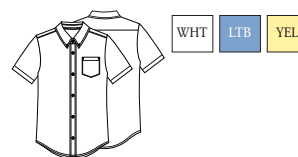
Classic long sleeve Oxford with feminine shaping at sides and back darts. Traditional button-down collar, pearlized buttons, long sleeve placket with barrel cuffs, single pocket over left chest back yoke and shirttail hem.



### Short Sleeve Oxford Shirt

60% Cotton, 40% Polyester  
57661 4-7 (Boys)  
57662 8-20 (Boys)  
57663 8H-20H (Husky)  
57664 S-3XL (Young Men)

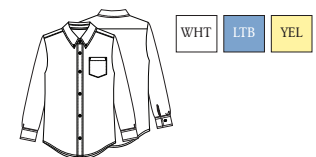
CORE ITEM. Traditional short sleeve Oxford with button-down collar, white pearlized buttons, single pocket over left chest, back yoke and shirttail hem.



### Long Sleeve Oxford Shirt

60% Cotton, 40% Polyester  
57671 4-7 (Boys)  
57672 8-20 (Boys)  
57673 8H-20H (Husky)  
57674 S-3XL (Young Men)

CORE ITEM. Traditional long sleeve Oxford with button-down collar, white pearlized buttons, single pocket over left chest, back yoke and shirttail hem.





# Skirts & Scooters



## Longer Length Kick Pleat Skirt

65% Polyester, 35% Cotton

- 55791A 4-6X\*
- 55792A 7-16\*
- 55793A 8h-20h (Girls' Plus\*)
- 55794 1/2-21/22 (Juniors)

Knee-length traditional twill skirt with front and back pleats, side zip closure and 2-inch hem for lengthening.



## Hipster Scooter

65% Polyester, 35% Cotton

- 55521 4-6X\*
- 55522A 7-16\*\*
- 55523 8h-20h (Girls' Plus)
- 55524 1/2-21/22 (Juniors)

Twill scooter sits lower on the hip, with box-pleat front, flat back and built-in poly-knit shorts.



# Scooters With Stretch Fabric



## Stretch Bow Pocket Scooter

53% Polyester, 44% Cotton, 3% Spandex

- 55980Z 2T-4T\*
- 55981AZ 4-6X\*
- 55982AZ 7-16\*\*
- 55983AZ 8h-20h (Girls' Plus\*\*\*)

Stretch twill scooter with bow pocket detail, four-pleat front, two flat seams on back and built-in shorts.



\*with elastic  
\*\*adjustable waist, side zip  
\*\*\*adjustable waist



## Stretch Pleated Tab Scooter

53% Polyester, 44% Cotton, 3% Spandex

- 55120Z 2T-4T\*
- 55121Z 4-6X\*
- 55122AZ 7-16\*\*
- 55123AZ 8h-20h (Girls' Plus\*\*)
- 55124 1/2-21/22 (Juniors)

CORE ITEM. Stretch twill scooter with four-pleat front, two decorative button tabs and built-in poly-knit shorts.



(BLK not available in 2T-4T)  
\*with back elastic  
\*\*adjustable waist, side zip



## Stretch Double Pleated Scooter

53% Polyester, 44% Cotton, 3% Spandex

- 55271A 4-6X\*
- 55272A 7-16\*
- 55273A 8h-20h (Girls' Plus\*)
- 55274 1/2-21/22 (Juniors)

Stretch twill scooter with double-pleat detail front and back, side pocket, side zip closure and built-in poly-knit shorts.



\*adjustable waist



## Stretch Fly Front Scooter

53% Polyester, 44% Cotton, 3% Spandex

- 55641 4-6X\*
- 55642 7-16
- 55643 8h-20h (Girls' Plus)
- 55644 1/2-21/22 (Juniors)

Stretch twill scooter with flat front and back panels, zip fly, two side pockets, belt loops, side vents at hemline and built-in poly-knit shorts.



\*with elastic



## Jumpers



### Kick Pleat Jumper

65% Polyester, 35% Cotton

54451	4-6X	\$9.50
54452	7-16	\$10.50
54453	8h-20h (Girls' Plus)	\$11.50

Twill jumper with front and back pleats, decorative button detail at waistband, two side seam pockets and back zip closure.



### Princess Seam Jumper

65% Polyester, 35% Cotton

54980	2T-4T	\$7.00
54911	4-6X	\$7.50
54912	7-16	\$8.50
54913	8h-20h (Girls' Plus)	\$9.50

Twill jumper with two-button adjustable shoulder straps, two side patch pockets and front princess seams.



### Zigzag Jumper

65% Polyester, 35% Cotton

54220	2T-4T	\$7.00
54221	4-6X	\$8.50
54222	7-16	\$9.50

Twill jumper with drop waistband and princess seams. Zigzag topstitching and bow detail on waistband with back zip closure.



## Knit Dress



### Pique Polo Dress

60% Cotton, 40% Polyester

54120	2T-4T*	\$9.00
54121	4-6X (Girls**)	\$9.75
54122	XS-XL (Girls)	\$10.50

Combed cotton/poly blend pique knit polo dress in ringspun yarns, with matching ribbed collar and banded sleeves, three-button front placket with dyed-to-match buttons, drop waist with pleated skirt.



## Modesty Shorts & Leggings



### Modesty Shorts

95% Combed Cotton, 7% Spandex

59402	XXS-XL (Girls)	\$5.00
59404	S-XL (Juniors)	\$6.00

Cotton/spandex knit modesty shorts.

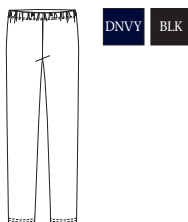


### Leggings

95% Combed Cotton, 7% Spandex

59412	XXS-XL (Girls)	\$7.00
59414	S-XL (Juniors)	\$8.00

Cotton/spandex knit leggings.





# Girls' & Juniors' Pants & Shorts



## Stretch "Matchstick" Narrow Leg Pant

53% Cotton, 44% Polyester, 3% Spandex

- 51281A 4-6X\*
- 51282 7-16\*
- 51283A 8h-20h (Girls' Plus\*)
- 51284 1/2-21/22 (Juniors)

Stretch twill pant with a leaner silhouette, two front pockets, back welt pocket, belt loops, fly front and button closure.



## Low Rise Pant

53% Cotton, 44% Polyester, 3% Spandex

- 51071AZ 4-6X\*
- 51072AZ 7-16\*
- 51073AZ 8h-20h (Girls' Plus\*)
- 51074Z 1/2-21/22 (Juniors)
- 51074TZ 1/2-15/16\*\* (Jr Tall)

CORE ITEM. Stretch twill pant with a lower rise that sits below the natural waist with a short fly, two front pockets, back welt pocket, belt loops and hook-and-eye closure.



## Flat Front Pant

53% Cotton, 44% Polyester, 3% Spandex

- 51941AZ 4-6X\*
- 51942AZ 7-16\*\*
- 51943AZ 8h-20h (Girls' Plus)
- 51944Z 1/2-21/22 (Juniors)

Traditional twill pant sits at the natural waist, with two front pockets, back welt pocket and button closure.



## Stretch "Matchstick" Shorts

53% Cotton, 44% Polyester, 3% Spandex

- 52221A 4-6X\*
- 52222 7-16\*
- 52223A 8h-20h (Girls' Plus\*)
- 52224 1/2-21/22 (Juniors)

Stretch twill shorts with a leaner silhouette, with two front pockets, back welt pocket, belt loops, fly front and button closure.



## Low Rise Shorts

53% Cotton, 44% Polyester, 3% Spandex

- 52071AZ 4-6X\*
- 52072AZ 7-16\*
- 52073AZ 8h-20h (Girls' Plus\*)
- 52074Z 1/2-21/22 (Juniors)

CORE ITEM. Twill shorts with lower rise sits below the natural waist, with a short fly, two front pockets, back welt pocket and hook-and-eye closure.



## Flat Front Shorts

53% Cotton, 44% Polyester, 3% Spandex

- 52941AZ 4-6X\*
- 52942AZ 7-16\*\*
- 52943AZ 8h-20h (Girls' Plus\*)
- 52944Z 1/2-21/22 (Juniors)

Twill shorts with two front pockets, back welt pocket.





# Boys' & Young Men's Pants



## Tri-Blend Flannel Pant With Stretch

53% Cotton, 45% Polyester, 2% Spandex

- 50521A 4-7 (adj. waist)
- 50522A 8-20 (adj. waist)
- 50523A 8H-20H (Husky, adj. waist)
- 50524S 28-42 (30" inseam)
- 50524 28-42\* (32" inseam)
- 50524T 32-42\* (35" inseam)

Tri-blend heathered flannel stretch dress pant in a modern straight fit with two front pockets, two back welt pockets (one with button closure), belt loops and fly with hook-and-eye closure.



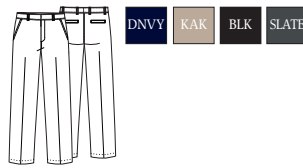
double knee

## Flat Front Pant With Double Knee

65% Polyester, 35% Cotton

- 50361A 4-7 (adj. waist)
- 50362 8-20 (adj. waist)
- 50362S 8-16 (slim, adj. waist)
- 50363 8H-20H (Husky)
- 50364S 28-42 (30" inseam)
- 50364 28-48 (32" inseam)
- 50364T 28-42 (35" inseam)

CORE ITEM. Traditional flat front, 8-oz twill pant with two front pockets, two back welt pockets, hook-and-eye closure and double knee (up to 20H).



## Stretch Narrow Leg Pant

53% Cotton, 44% Polyester, 3% Spandex

- 50481A 4-7 (adj. waist)
- 50482 8-20 (adj. waist)
- 50483A 8H-20H (Husky, adj. waist)
- 50484 28-42 (32" inseam)
- 50484S 28-42 (30" inseam)

Slim fit, stretch twill pant with wider belt loops, two front pockets and two back welt pockets.



double knee

## Unisex Pull-on Pant With Faux Fly

65% Polyester, 35% Cotton

- 50400 2T-4T

Pull-on twill pant with faux fly, elastic back waistband, two front pockets and double knee.



double knee

## Unisex Pull-on Pant

65% Polyester, 35% Cotton

- 51060 2T-4T\*
- 51061N 4-7
- 51062 8-16
- 51063 8H-20H (Husky)
- 51064 S-XL (Adult)

CORE ITEM. Pull-on twill pant with full elastic waistband, two front pockets and double knee (up to size 20H). Adult sizes have two front pockets and one back patch pocket.



# Boys & Young Men's Shorts



### Flat Front Shorts

65% Polyester, 35% Cotton

- 52361A 4-7 (adj. waist)
- 52362 8-20 (adj. waist)
- 52362S 8-16 (slim, adj. waist)
- 52363 8H-20H (Husky)
- 52364 28-48 (Young Men)

CORE ITEM. Traditional flat front, 8-oz. twill shorts with two front pockets, two back welt pockets and hook-and-eye closure.



### Stretch Slim Fit Shorts

53% Cotton, 44% Polyester, 3% Spandex

- 52481A 4-7 (adj. waist)
- 52482A 8-20 (adj. waist)
- 52483A 8H-20H (Husky, adj. waist)
- 52484 28-42 (Young Men)

Slim fit, stretch twill shorts with wide belt loops, two front pockets, two back welt pockets and front button closure.



### Unisex Pull-on Shorts With Faux Fly

65% Polyester, 35% Cotton

- 52360 2T-4T

Pull-on twill shorts with faux fly, elastic back waistband and two front pockets.

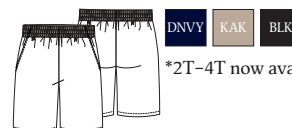


### Unisex Pull-on Shorts

65% Polyester, 35% Cotton

- 52130 2T-4T\*
- 52131N 4-7
- 52132 8-16
- 52133 8H-20H (Husky)

CORE ITEM. Pull-on twill shorts with full elastic waistband and two front pockets.



\*2T-4T now available in BLK



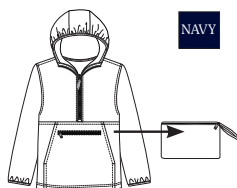
# Jackets



## Unisex Pack-Away Nylon Pullover

100% Nylon Taffeta  
53352R XS-XL (Youth)  
53354R S-3XL (Adult)

Lightweight pack-away nylon pullover with front half-zip closure and reflective zipper tab, elasticized hood and sleeve openings, front oversized kangaroo pocket and front zipper pocket that folds into a pouch.



## Unisex Bomber Jacket

100% Nylon Taffeta outershell,  
Reversed Fleece inner liner  
53400R 2T-4T  
53402 XS-XL (Youth)  
53404 S-3XL (Adult)

Hooded nylon zip-front jacket with fleece lining, dyed-to-match zippers, two front zipper pockets, an inside chest pocket, and elastic cuffs and waistband (2T-4T: no chest pocket, no zippers on front pockets).



(BLK, BUR, DKPR, HUN & ROY not available in 2T-4T)

Toddle sizes available in NAVY



## Unisex Polar Fleece Jacket

100% Polyester  
59200R 2T-4T  
59202 XS-XL (Youth)  
59204 S-3XL (Adult)

Zip-front no-pill polar fleece jacket with dyed-to-match zipper, elastic cuffs and waistband, and two side pockets.



(2T - 4T available in BUR & DNVY only)



## Unisex Zip-up Sweatshirt

80% Cotton, 20% Polyester  
59222 XS-XL (Youth)

Hooded zip-front sweatshirt with kangaroo-style pockets, rib-knit cuffs and bottom hem.



# Sweaters

Fully fashioned • Fine gauge • Soft knit • 100% Colorfast • Anti-pill • Reinforced seams • Comfy & durable • Perfect for monograms



## Girls' Cardigan

100% Acrylic  
56422 XXS-XL (Girls)  
56424 S-XL (Junior)

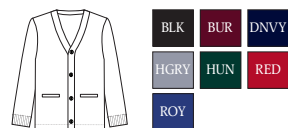
Half Milano no-pill jewel neck cardigan with ribbed collar, cuffs and hem, and narrow button front placket with dyed-to-match buttons.



## Unisex Cardigan

100% Acrylic  
56430 2T-4T (Toddler)  
56432 XXS-XL (Youth)  
56434 S-3XL (Adult)

No-pill V-neck cardigan with half Milano stitch, dyed-to-match buttons, two welt pockets, ribbed cuffs and hemmed bottom.



(2T-4T only available in BUR & DNVY; XXS only available in DNVY & HUN)



## Unisex Long Sleeve V-Neck

100% Acrylic  
56702 XS-XL (Youth)  
56704 S-3XL (Adult)

No-pill V-neck pullover with half Milano stitch and ribbed cuffs, collar and hem.



## Unisex V-Neck Vest

100% Acrylic  
56912 XS-XL (Youth)  
56914 S-3XL (Adult)

No-pill V-neck pullover vest with half Milano stitch and ribbed armholes, neck and hem.



# Socks & Hosiery



## Unisex Athletic No-Show Socks

Bamboo Rayon blend, seamless toe, cushioned footbed (3 pk.)

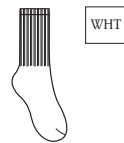
style #	shoe size	price
5HM501	9-2.5 (S)	
S-XL	2-5.5 (M)	
	4-10 (L)	
	6-12 (XL)	



## Unisex Athletic Crew Socks

Bamboo Rayon blend, seamless toe, cushioned footbed (3 pk.)

style #	shoe size	price
5HM401	9-2.5 (S)	
S-XL	2-5.5 (M)	
	4-10 (L)	
	6-12 (XL)	



## Unisex Ribbed Crew Socks

Bamboo Rayon blend, seamless toe (3 pk.)

style #	shoe size	price
5HM001	9-2.5 (S)	
S-XL	2-5.5 (M)	
	4-10 (L)	
	6-12 (XL)	



## Girls' & Juniors' Triple Roll Socks

Bamboo Rayon blend, seamless toe (3 pk.)

style #	shoe size	price
5HF111	9-2.5 (S)	
S-XL	2-5.5 (M)	
	4-10 (L)	
	6-12 (XL)	



## Girls' & Juniors' Opaque Knee-High Socks

Bamboo Rayon blend, seamless toe (3 pk.)

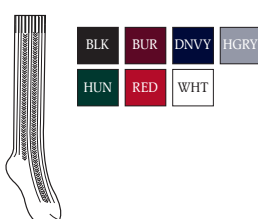
style #	shoe size
5HF101	9-2.5 (S)
S-XL	2-5.5 (M)
	4-10 (L)
	6-12 (XL)



## Girls' & Juniors' Cable Knit Knee-High Socks

Bamboo Rayon blend, seamless toe (3 pk.)

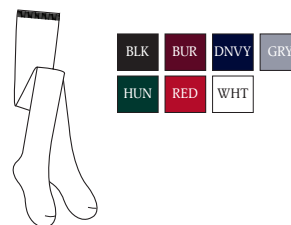
style #	shoe size
5HF102	9-2.5 (S)
S-XL	2-5.5 (M)
	4-10 (L)
	6-12 (XL)



## Girls' & Juniors' Opaque Tights

Bamboo Rayon blend, anti-roll waistband (single pk.)

style #	weight	height	size
5HF201	28-38 lbs.	39"-45"	4-6
	38-50 lbs.	45"-51"	6-8
	50-62 lbs.	51"-56"	8-10
	62-74 lbs.	56"-60"	10-12
5HF201	74-110 lbs.	60"-64"	12-14
5HF202	95-130 lbs.	5' 1"-5' 5"	Petite
	125-160 lbs.	5' 3"-5' 7"	Average
	155-180 lbs.	5' 7"-6' 0"	Tall



## Girls' & Juniors' Cable Knit Tights

Bamboo Rayon blend, anti-roll waistband (single pk.)

style #	weight	height	size
5HF301	28-38 lbs.	39"-45"	4-6
	38-50 lbs.	45"-51"	6-8
	50-62 lbs.	51"-56"	8-10
	62-74 lbs.	56"-60"	10-12
5HF301	74-110 lbs.	60"-64"	12-14
5HF302	95-130 lbs.	5' 1"-5' 5"	Petite
	125-160 lbs.	5' 3"-5' 7"	Average
	155-180 lbs.	5' 7"-6' 0"	Tall





# Body Measurement Charts

## preschool

sizes	2t	3t	4t
height	35	38	41
weight (lbs)	28 - 30	30 - 33	34 - 36
chest	21	22	23
waist	20	21	22
hip/seat	21	22	23

## girls

sizes	4	5	6	6x	7	8	10	12	14	16
	xs				s		m		l	
height	39 - 41	42 - 44	45 - 47	48 - 49	50 - 51	52 - 53	55 - 56	57 - 58	61	62 - 63
chest	22 - 22.5	23 - 23.5	24 - 24.5	25 - 25.5	25.5 - 26.5	26.5 - 27.5	28 - 29	29.5 - 30.5	31 - 32	32.5 - 33.5
waist	20.5 - 21	21.5 - 22	22.5 - 23	23.5 - 24	23.5 - 24	24 - 24.5	25 - 25.5	26 - 27	27 - 28.25	28 - 29.5
hip/seat	22 - 22.5	23 - 23.5	24 - 24.5	25 - 25.5	27.5 - 28.5	28.5 - 29	29 - 29.5	31 - 32.5	33.5 - 35	36 - 37
inseam	16	18.25	20.25	21.25	22.75	24	25	26.25	27.5	28.75

## girls plus

sizes	7h*	8h	10h	12h	14h	16h	18h	20h	22h*	24h*
height	50 - 51	52 - 53	55 - 56	57 - 58	61	62 - 63	63 - 64	64	64	64
chest	28 - 29	29.5 - 30.5	31 - 32	32.5 - 33.5	34 - 35	35.5 - 36	36.5 - 37	38 - 39	40 - 40.5	41 - 41.5
waist	26 - 26.5	27 - 27.5	28 - 29	29.5 - 30	31 - 31.5	32 - 33	33.5 - 34	35 - 35.5	36 - 36.5	37 - 38
hip/seat	29.5 - 20	30.5 - 31	32 - 33	33.5 - 34.5	35 - 36	37.5 - 38	38.5 - 39.5	40 - 41.5	42 - 43	44
inseam	23	24	25	26.25	27.5	28.75	29	29.5	29.5	29.5

\* Available in select styles only.

## juniors

sizes	1/2	3/4	5/6	7/8	9/10	11/12	13/14	15/16	17/18	19/20	21/22
	xs		s		m	l	xl	2xl		3xl	
chest	31 - 31.5	33 - 33.5	34 - 34.5	35 - 36	36 - 37	37.5 - 38	39 - 40	40.5 - 41.5	42.5 - 43.5	44.5 - 45.5	46.5 - 47.5
waist	25 - 25.5	25.5 - 26	26 - 26.5	28 - 29	29 - 30	32	33.5 - 34	34 - 34.5	36.5 - 37	39	40
hip/seat	34 - 34.5	35 - 35.5	36 - 36.5	37 - 38	38 - 38.5	39.5 - 40	41 - 42	42.5 - 43.5	44.5 - 45.5	46.5 - 47	48 - 48.5
inseam	31	31	31	31	31	31	31	31	31	31	31

\* Juniors tall are available in select styles.

## missy

limited styles

sizes	6	8	10	12	14	16
waist	27 - 27.5	29	29 - 30	32 - 32.5	33	34 - 34.5
hip/seat	37 - 37.5	38	39	41	42.5 - 43	45
inseam	31	31	31	31	31	31

# Body Measurement Charts

## boys'

sizes	4	5	6	7	8	10	12	14	16	18	20
	xs			s		m		l		xl	
height	39-41	42 - 44	45 - 47	50 - 51	52 - 53	55 - 56	57 - 58	61	62 - 63	64 - 65	66 - 67
chest	21 - 22	23	24	24 - 24.5	25.5 - 26.6	26 - 27	28.5	30.5	32	33 - 34	35
waist	20.5 - 21	21.5 - 22	22.5 - 23	23.5 - 24	24.5-25	25.5 - 26	26.5 - 27	27.5 - 28	28.5 - 29	30 - 30.5	31 - 31.5
hip/seat	23.5 - 24	24 - 25	25 - 26	25 - 26.5	27-28	28 - 29	33	35	37	39	40
inseam	16	17.5	19	20.5	22	23	24	25.5	26.5	28	29

## boys' slim

sizes	8s	10s	12s	14s	16s
height	52 - 53	55 - 56	57 - 58	61	62 - 63
chest	25 - 26	27 - 28	29 - 30	29.5 - 30.5	31 - 32
waist	22 - 22.5	23 - 23.5	24	25 - 25.5	26.5 - 27
hip/seat	25 - 26	27 - 28	29 - 30	29.5 - 30.5	31 - 32
inseam	23	24	25	26 1/2	28

## boys' husky

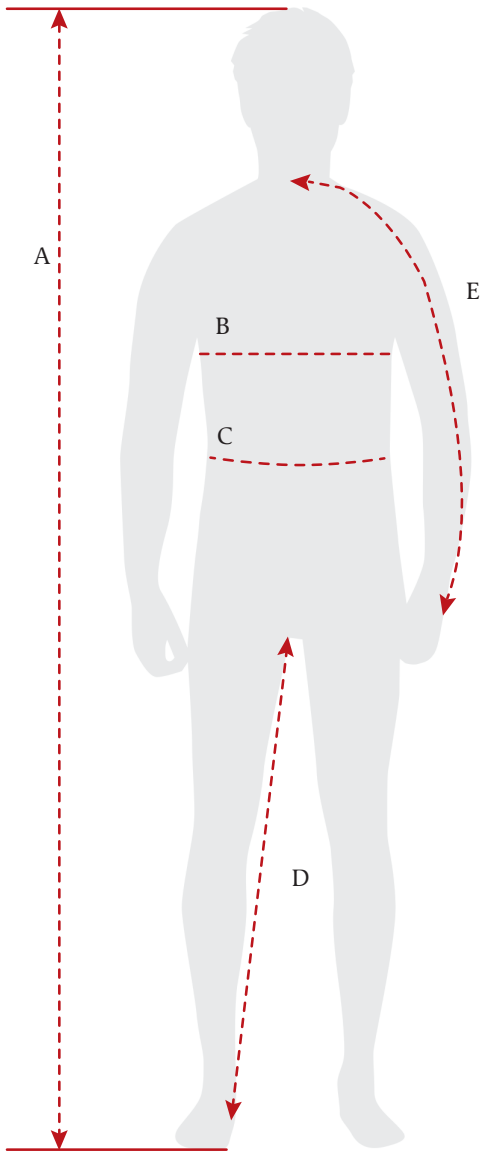
sizes	8h	10h	12h	14h	16h	18h	20h
height	52 - 53	55 - 56	57 - 58	61	62 - 63	64 - 65	66 - 67
chest	28.5 - 29.5	30 - 31	32 - 33	34 - 35	36 - 37	38 - 39	40 - 41
waist	26 - 27.5	27 - 28.5	28.5 - 29.5	29.5 - 31	31 - 32	32 - 33.5	33.5 - 34.5
hip/seat	28.5 - 29.5	30 - 31	32 - 33	34 - 35	36 - 37	38 - 39	40 - 41
inseam	22	23	24	25.5	26.5	28	29

## young men's

sizes	28	29	30	31	32	33	34	36	38	40	42	44	46	48
	xs				s		m		l		xl	2xl		3xl
chest	32-33	33-34	34-35	35-36	36-37	37-38	38-39	40-41	42-43	44-45	46-47	48-49	50-51	52-53
waist	26.5	28	29	30 - 30.5	31.5 - 32	33	34	36	38	40	42	44	46	48
hip/seat	33 - 34	34 - 35	35 - 36	36 - 37	37 - 38	40 - 41.5	42 - 43.5	44 - 45.5	46 - 47	48 - 49	49.5 - 50	51.5 - 52	52 - 53	54 - 55
inseam short	30	30	30	30	30	30	30	30	30	30	30	—	—	—
inseam reg	32	32	32	32	32	32	32	32	32	32	32	32	32	32
tall inseam	35	35	35	35	35	35	35	35	35	35	35	—	—	—



# How to Measure



## Measuring Tips

We want to ensure your customer's child has the best fit possible, so here are some tips to help you order the correct size.

- When using a measuring tape, do not pull tape taut against the body but rather place tape loosely to allow for movement and breathing. (If the parent gets home and doesn't have a measuring tape, they can use a piece of string. After measuring, they can lay the string against a ruler or yard stick.)
- We suggest placing two fingers within the circumference of the tape when measuring the child, as this is a proportional amount to allow for breathing ease.
- Each child grows at a different rate, so you may want to purchase a larger size if your child is close to the body measurements shown.
- Many of your youth products feature adjustable waists and other growth features that make finding the perfect fit that much easier.

### A: HEIGHT

Stand in stocking feet with feet together and back to a wall. Measure from the floor to the top of the head.

### B: CHEST

Measure under child's arms at the fullest point of bust/chest. When measuring your child, place two fingers within the tape to allow for movement and breathing for best fit.

### C: WAIST

Measure around the waist (not over pants) at your child's natural waistline. When measuring your child, place two fingers within the tape to allow for movement and breathing for best fit.

### D: INSEAM

Measure a similar pant that fits your child well. Measure pant from the crotch intersection down to the bottom of the pant hem.

### E: SLEEVE

Measure from child's center back neck across shoulder down arm to wrist bone.

## color abbreviations

BLK, SSBK Black	BUR Burgundy	CMBL Columbia Blue	DGRY Dark Gray	DNVY Dark Navy	DKPR Dark Purple
GOLD Gold	GRY Gray	HGRY Heather Gray	HUN, SSHN Hunter	SSKG Kelly Green	KAK Khaki
BLUU, LTB, SSLB Light Blue	NAVY, SSNV Navy	ORG Orange	PINK Pink	RED Red	ROY, SSTRY Royal
SLATE Slate	TEAL Teal	WHT, SSWT White	WINE Wine	YEL Yellow	

# Contact List & Return Policy

Bill Bosch - Corporate Accounts  
 9800 De Soto Avenue, Chatsworth, CA 91311  
 Phone: 818-671-2142  
 Email: bbosch@strategicpartners.net

Hector Ruben  
 Cell: 787-361-6950  
 Email: hruben@strategicpartners.net  
 Territory: Caribbean & Puerto Rico

Mike Boyd  
 Cell: 678-372-1866  
 Email: triplemsales@bellsouth.net  
 Territory: AL, FL Panhandle & GA

Bert Carlevato  
 Cell: 909-725-3444  
 Email: b.carlevato3@verizon.net  
 Territory: AZ, CA & NV

Jon Saari  
 Office: 304-905-1984  
 Email: jksaari@comcast.net  
 Territory: IL, IN, KY, MI, OH, Western PA, TN, WI & WV

Todd Swanson  
 Cell: 713-410-9668  
 Email: swansontodd9@gmail.com  
 Territory: AR, MO & TX

Drew Caplan  
 Cell: 519-994-2275  
 Email: dcaplan@strategicpartners.net  
 Territory: Canada

Justin Oxford  
 Cell: 954-661-7978  
 Email: justinoxford@att.net  
 Territory: FL, NC & SC  
 excluding Panhandle

Eddie Ming  
 Office: 214-221-5279  
 Email: emingsports@att.net  
 Territory: LA, MS, NM, OK & El Paso TX

Kenny Brickel  
 Office: 516-933-6865  
 Email: Royalkenny@aol.com  
 Territory: CT, DC, DE, MA, ME, MD, NH, NJ, NY, Eastern PA, RI, VA & VT

ClassroomUniforms.biz

Manage your Classroom School Uniforms business in the easiest way:

- Check inventory status and product descriptions.
- Place orders 24 hours a day.
- Review account history, and open order status.
- Download marketing materials.
- Receive promotional offers exclusive to web customers. It's free and easy to sign up.

Customer Care Representatives  
 M-F 6:00 AM - 4:00 PM Pacific time  
 Phone: 888-671-8754  
 Fax: 818-283-7271

## 2020 Classroom Uniforms Return Policy

Strategic Partners is fully committed to providing quality products and service. Products with quality issues may be returned within 30 days of the invoice date. The following guidelines will help expedite the process and will ensure that the proper credit is being applied to your account.

- A Return Authorization (RA) number is required for returned merchandise. Please contact Customer Care at 888-671-8754. Be prepared to provide the corresponding invoice number for the merchandise being returned.
- Your RA number will be issued by email or fax. Please discuss your preference with your Customer Care representative.
- Unauthorized returned merchandise will not be credited or returned.
- We reserve the right to deny issuing credit for damaged garments due to misuse, abuse, alteration or excessive wear.
- Returns are subject to a 20% restocking fee.
- Trans-shipping (shipping, drop-shipping or forwarding merchandise for resale to any location) without express prior written consent is prohibited.

Prices are subject to change without prior notice.

If you have any questions about these policies, please contact our Customer Care Department at 888-671-8754 or fax 818-283-7271 for further assistance.





9800 De Soto Ave., Chatsworth, CA 91311  
Toll-free: 888.671.8754 Fax: 818.283.7271  
Order 24/7: [classroomuniforms.biz](http://classroomuniforms.biz)  
[classroomuniforms.com](http://classroomuniforms.com)

Classroom School Uniforms  
are sold only at authorized retailers.